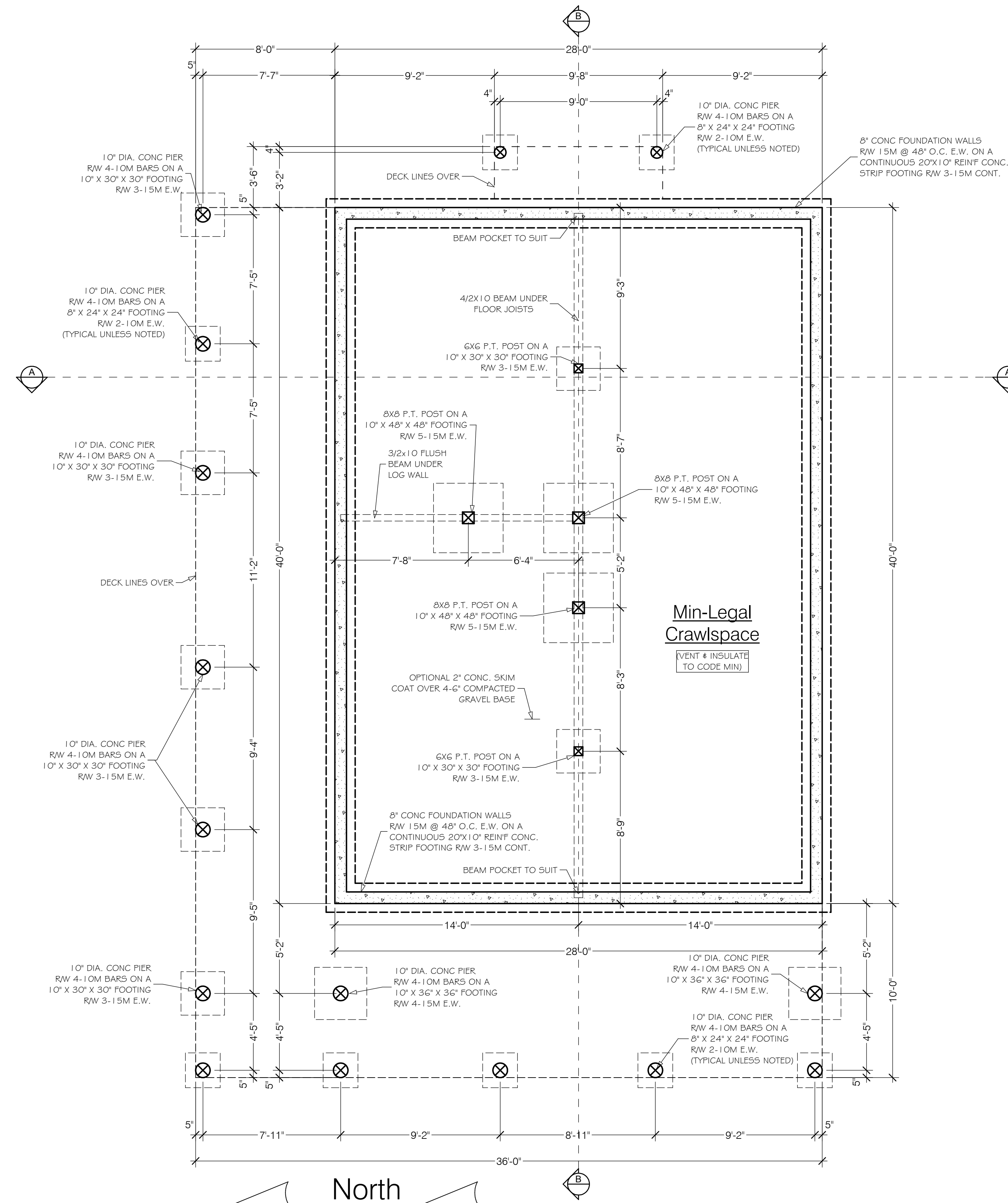


# Bottom Round Anchoring

1 1/2" = 1'-0" Typical



# Foundation Plan

1/4" = 1'-0"

These plans are drawn to as per common log home and UBC construction practices with design review conducted by Sitka Log Homes Inc. Although every effort has been made as to accuracy of dimensions, all drawings and dimensions must be verified by the General Contractor and any discrepancies, errors or omissions must be reported to Sitka Log Homes for review and clarification prior to commencement of construction.

Job Title:  
**Jean Residence**  
 Design For:  
 Sitka Log Homes Inc.

Date:  
 June 22, 2008  
 Drawing Status:  
 Final Plans  
 Drawn By:  
 Sitka Log Homes Inc.  
 Scale (unless noted otherwise on plans):  
 1/4" = 1'-0"  
 Drawing Title and Number:  
 A.2 - Foundation Plan