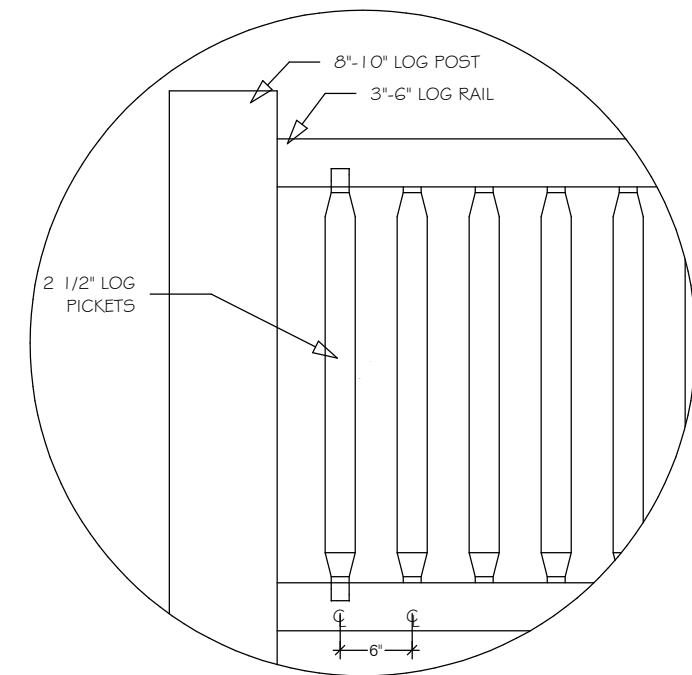


Shrinkage Framing

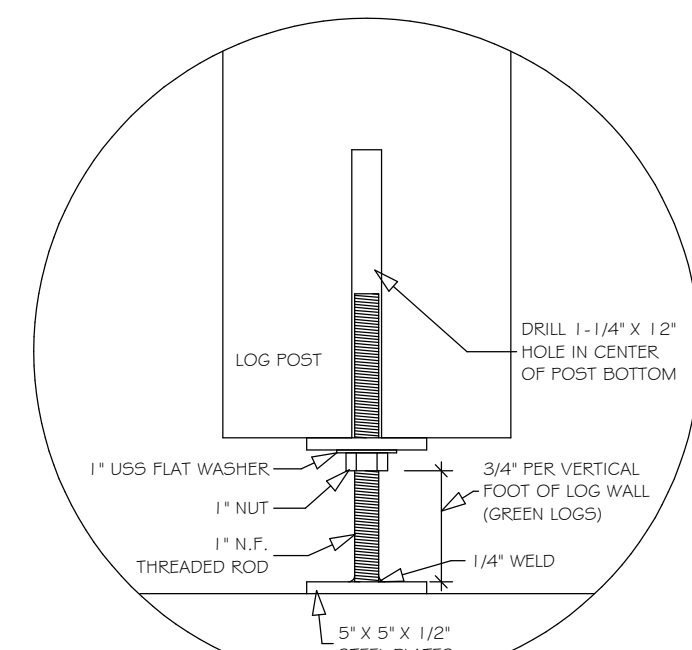
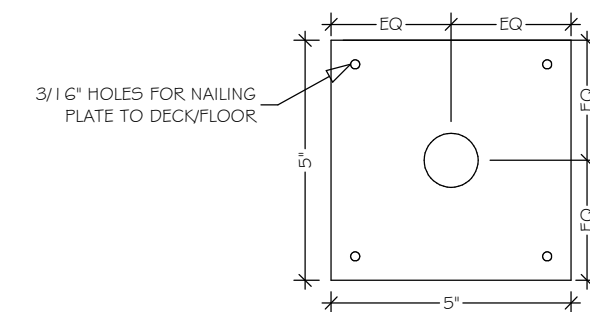
1" = 1'-0" Typical



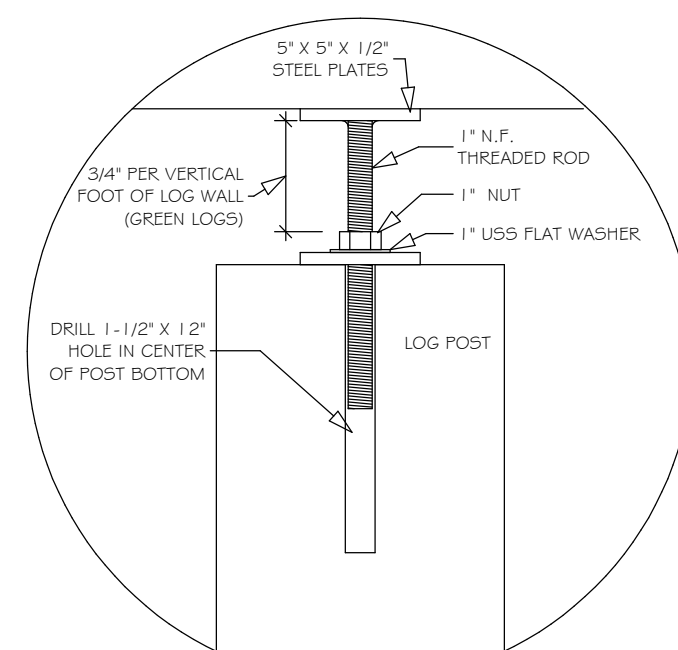
Log Railing

1 1/2" = 1'-0" Typical

PLAN VIEW OF PLATES
(NOT TO SCALE)



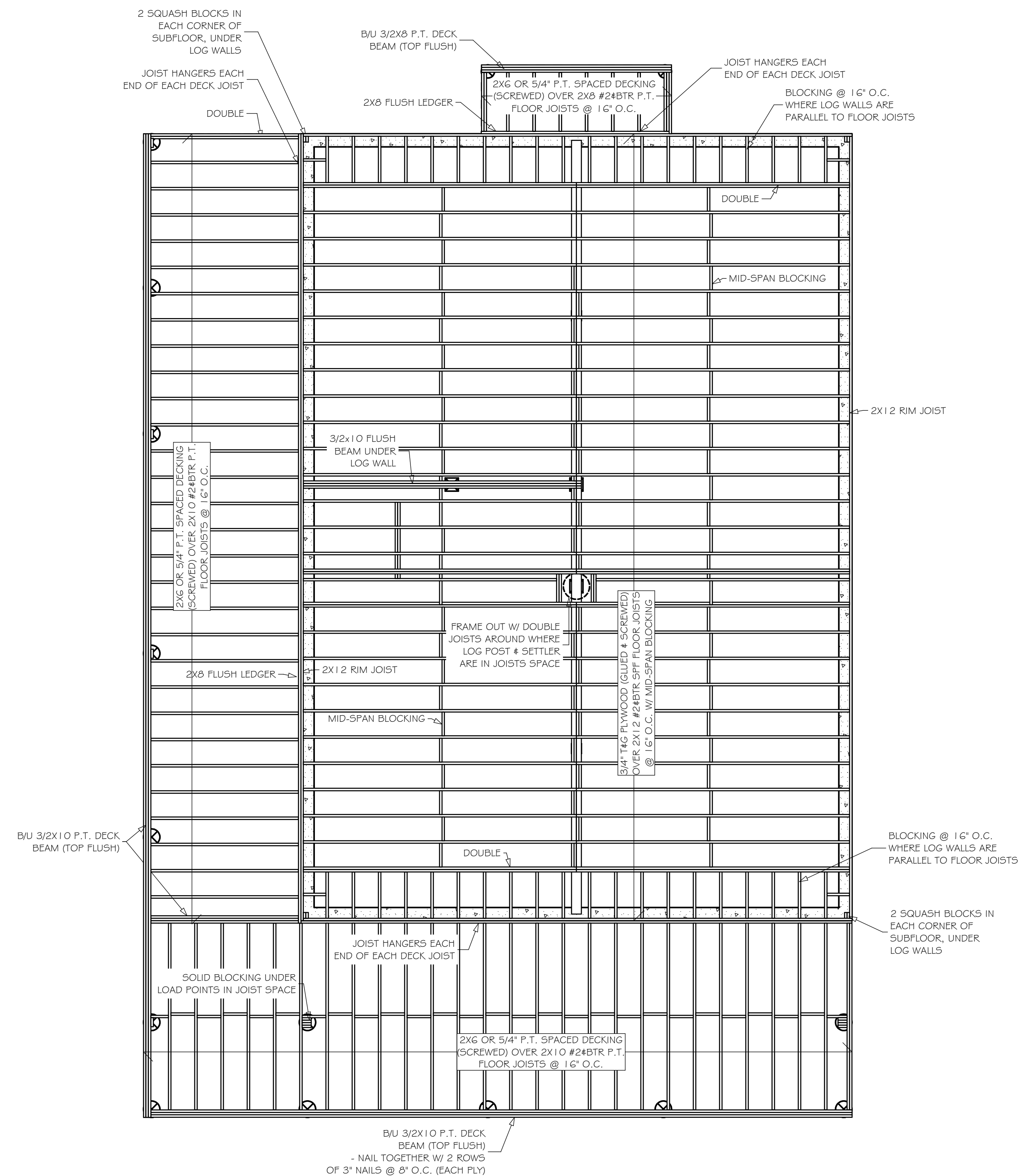
SETTLER ON BOTTOM



SETTLER ON TOP

Log Post w/ Settler

1 1/2" = 1'-0" Typical



Main Floor Framing

1/4" = 1'-0"

These plans are drawn to as per common log home and UBC construction practices with design review conducted by Sitka Log Homes Inc. Although every effort has been made as to accuracy of dimensions, all drawings and dimensions must be verified by the General Contractor and any discrepancies, errors or omissions must be reported to Sitka Log Homes for review and clarification prior to commencement of construction.

Job Title:

Jean Residence

Design For:
Sitka Log Homes Inc.

Date:
June 22, 2008

Drawing Status:
Final Plans

Drawn By:
Sitka Log Homes Inc.

Scale (unless noted otherwise on plans):
1/4" = 1'-0"

Drawing Title and Number:
A.3 - Main Floor Framing