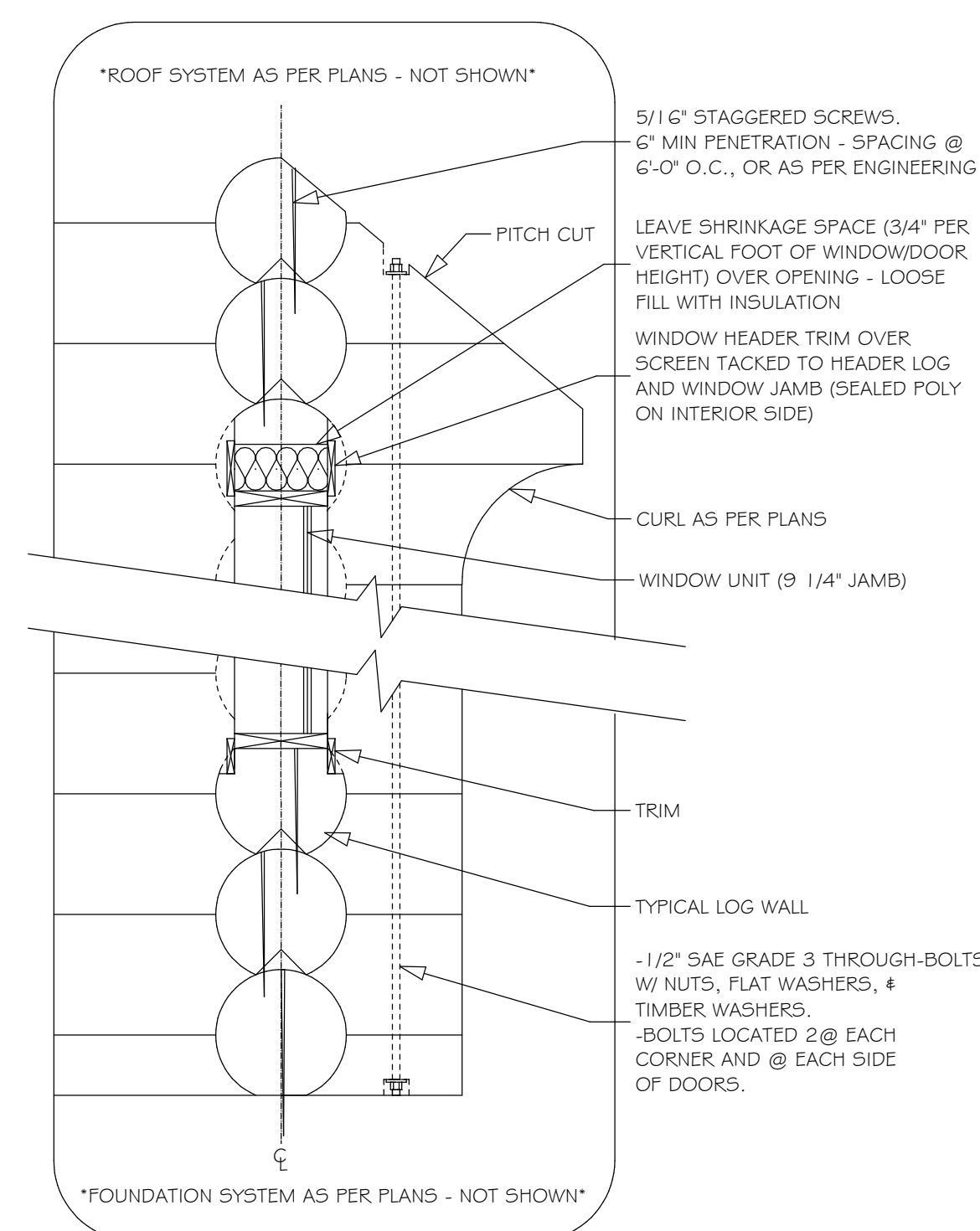


Log Stairs

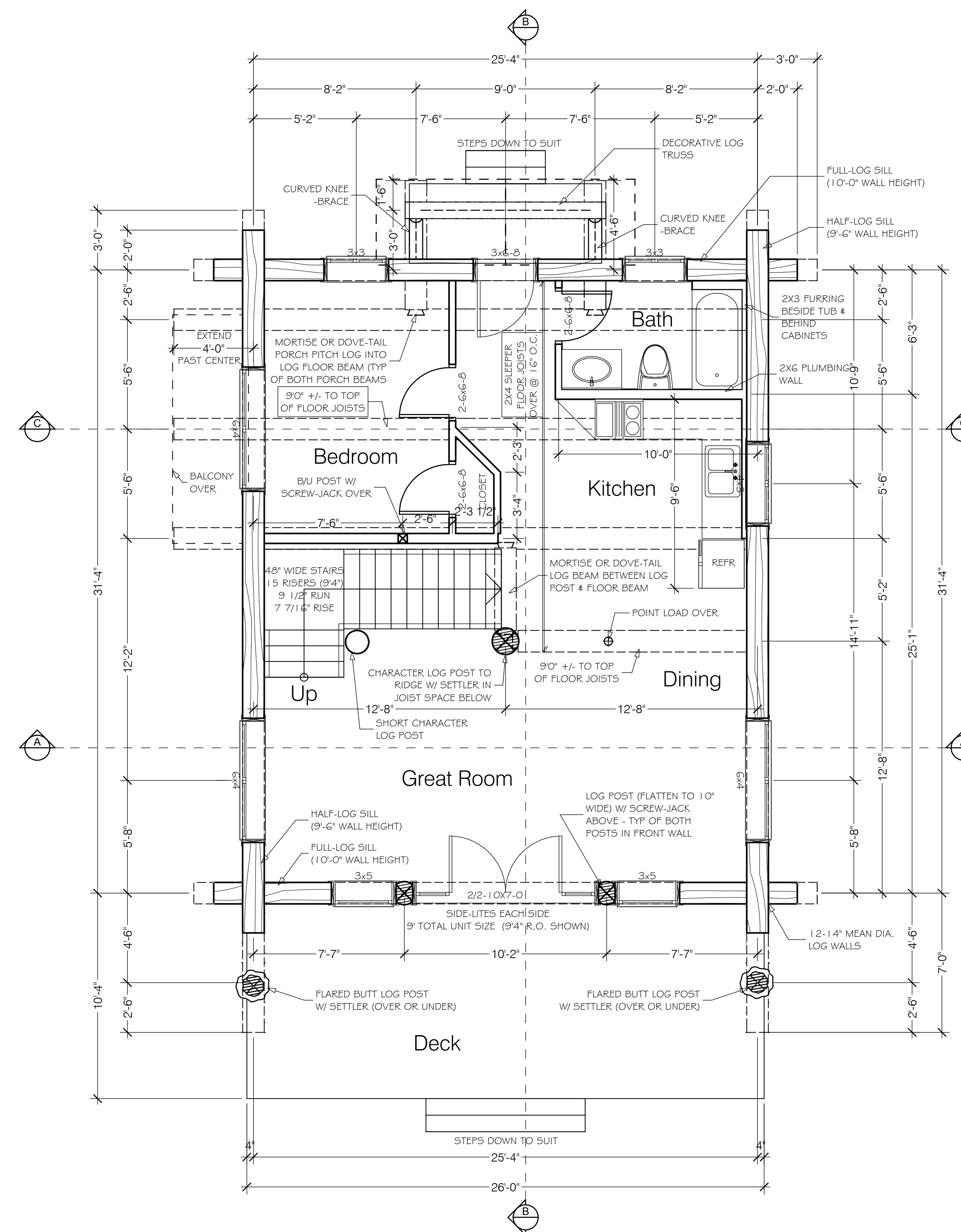
1 1/2" = 1'-0" Typical



*DOOR OPENING IN LOG WALLS ARE SIMILAR TO WINDOW OPENINGS, HOWEVER THERE WILL BE NO BOTTOM TRIM, AND DEPENDING ON THE MOISTURE CONTENT OF THE LOGS, A 1x8 HEADER TRIM MAY BE REQUIRED TO COVER THE SHRINKAGE SPACE.

Log Wall Section

3/4" = 1'-0" Typical



Main Floor Plan

1/4" = 1'-0" 832 SQ.FT

Unless these plans have an engineer's stamp/seal, they are not to be used for construction. Perfect Drafting & Design does not guarantee the accuracy of the load calculations and sizes shown on these plans and requires the plans to be engineered by a certified individual or group, licensed in the project jurisdiction.

Job Title:
Home Show Plans '08

Design For:
Sitka Log Homes Inc.

Date:
Jan 11, 2008
Drawing Status:
Final Plans (Pre-Engineering)
Drawn By:
Perfect Drafting & Design
Scale (unless noted otherwise on plans):
1/4" = 1'-0"
Drawing Title and Number:
Page 4 of 8 - Main Floor